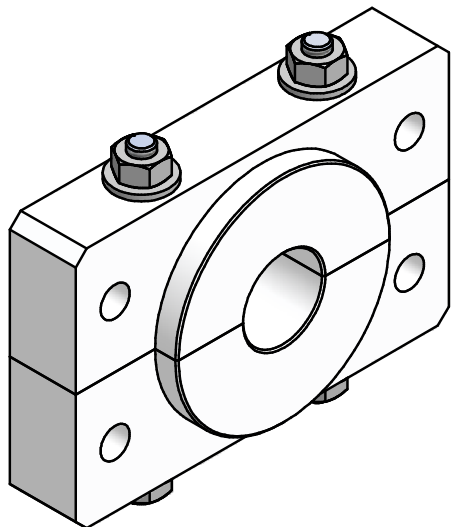
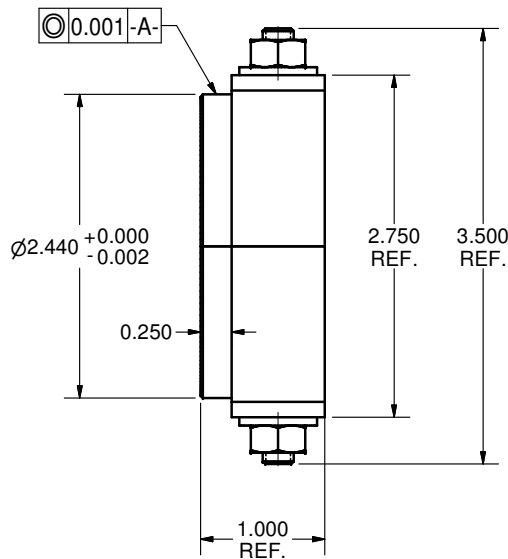
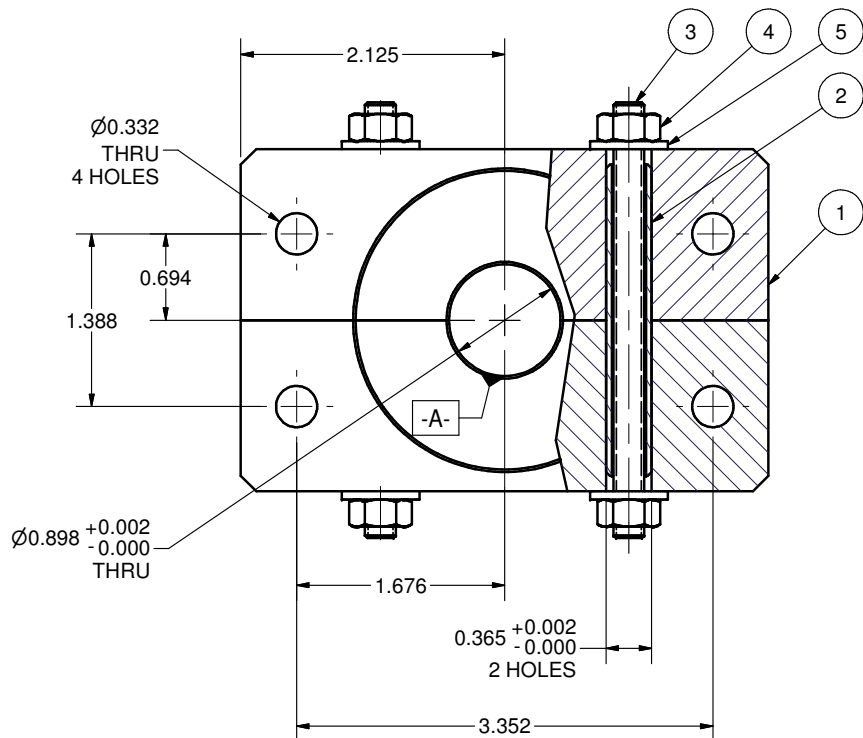
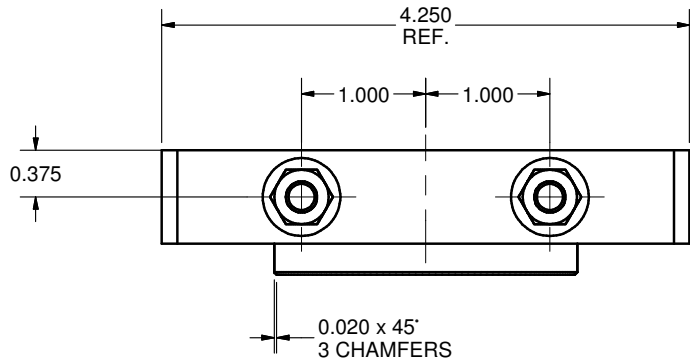


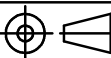
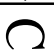
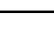


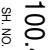
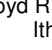
REVISIONS					
SYM.	ZONE	DESCRIPTION		DATE	APP.
C		Issued all design changes as Rev C (TIO)		4/19/07	SAB



C	100.471.000	REV.
SH. NO. 1	OF 1	C

QTY.: 1 PER PROJECT

5	-	1/4 Washer	4				C
4	-	1/4-20 Hex Nut	4				C
3	100.471.003	THREADED ROD	2				C
2	100.471.002	TUBE	2				C
1	100.471.001	PLATE	2				C

		ITEM	DWG. NO.	DESCRIPTION	G1	G2	G3	REMARKS	REV.
					QUANTITY				
	PRINT DISTR.	PLOT DATE: 4/19/2007 CAD FILE NAME: 100-471-000.idw							
		100.471.000 SH. NO. 1 OF 1	UNLESS OTHERWISE SPECIFIED:  DIMENSIONS ARE IN INCHES;  TOLERANCES ON: .00 ± .010 .000 ± .005 FRACTIONS ± 1/64 ANGLES ± 0.5° ALL SURFACES 	<div> <b>LEPP</b></div> <div>CORNELL UNIVERSITY Floyd R. Newman Laboratory Ithaca, NY 14853</div> <div>75 kW CW INPUT COUPLER, LINEAR GUIDE ALIGNING PLATE SUBASM</div>					
			REV.	CHECKED BY: VGV	DRAWN BY VM	DRAWN FOR SAB	DATE 1/25/2006	SCALE 1:1	
		APPROVED BY: SAB							